



RUBBER EYESHADE

1/4 INCH SOCKET

WEAVER ACCESSORY RAIL

EXTERNAL POWER SUPPLY OPTION

FOCUSABLE LENS

VIDEO OUT



EASY IN OPERATING

LARGE EYEPIECE ADJUSTMENT

1/4 INCH SOCKET

RUBBER-ARMORED BODY

### ⚡ Power Saving Modes

When a Quantum Lite is inclined vertically in either direction at more than 70° for 1, 3 or 5 minutes (depending on user preferences) the scope will automatically turn off. When video recording is not used, video output may also be disabled to extend battery life. Both options are available in the Quantum Lite's menu.



## Thermal Imaging Scopes QUANTUM LITE

[www.pulsar-nv.com](http://www.pulsar-nv.com) | 
 [@PulsarNightVision](https://www.facebook.com/PulsarNightVision) | 
 [@pulsar.expert](https://www.instagram.com/pulsar.expert) | 
 [Pulsar Night Vision](https://www.youtube.com/PulsarNightVision)



**THERMAL  
TECHNOLOGY**

## Thermal Imaging Scopes QUANTUM LITE

XQ23V / XQ30V





## ⚡ Wide Range of Operating Temperatures

With a frost-resistant AMOLED display, the Quantum Lite Thermal Imaging Scope is designed to deliver flawless performance at an extreme temperature range of -25°C – +50°C.

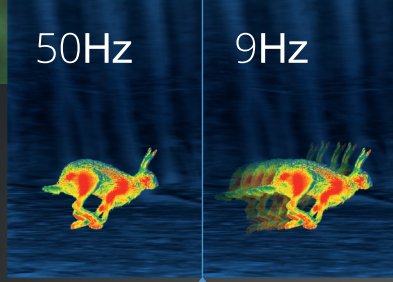
## ⚡ Stadiametric Rangefinder

Bases on estimated heights of observed objects, the stadiametric rangefinding reticle makes determining precise distances fast, easy, reliable and repeatable.



## ⚡ Long Viewing Range

Depending on model, the Quantum Lite is capable of detecting an average human-size target, dressed in outerwear, against a forest backdrop, at a range up to 800 - 900 m.



## ⚡ High Image Frequency

At a high refresh rate of 50 Hz, the Quantum Lite provides comfortable viewing throughout dynamic, rapid motion.

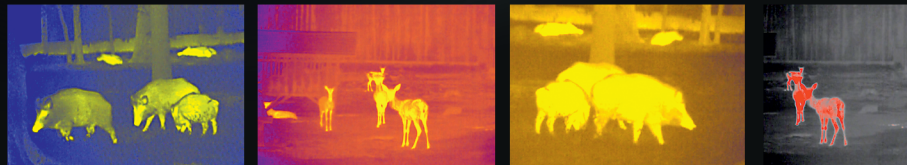
## ⚡ Video Output

The Quantum Lite is equipped with an analog video output to enable connectivity with an external display or recording device.



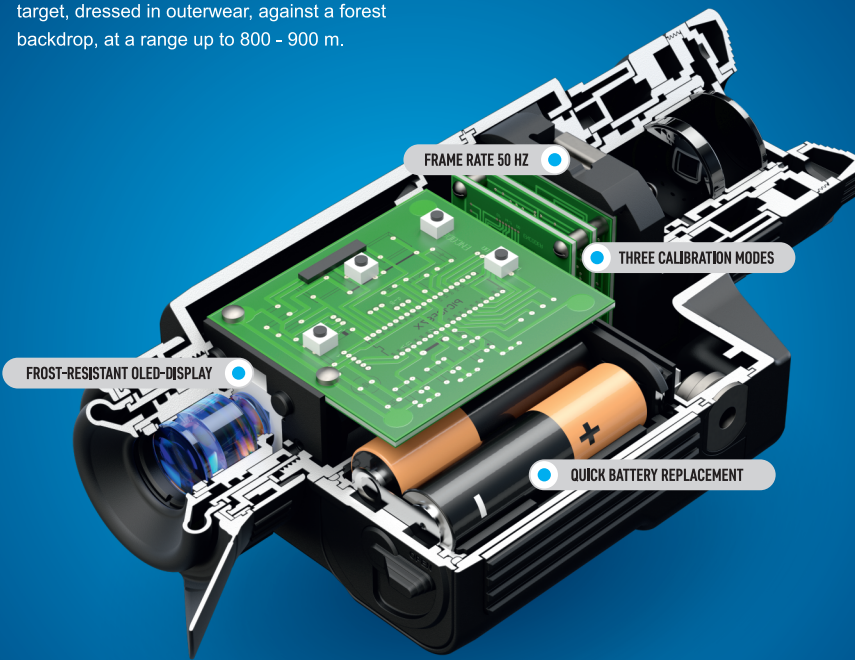
## ⚡ Self-Contained Power Supply

The Quantum Lite is powered by four AA batteries housed in a convenient case and inserted into an easy-to-access battery compartment.



## ⚡ Color Palettes

The Quantum Lite offers 7 color palettes for true colorized temperature mapping, including user favorites “white hot” and “black hot” modes.



## ⚡ Operating Modes

The Quantum Lite features three operating modes: City (enhanced contrast), Forest (low contrast) and Identification (improved rendering of heat signature details). Each mode optimizes imaging based on viewing conditions.

## ⚡ Calibration

The Quantum Lite offers three calibration modes: Silent Manual (“M”), Automatic (“A”) and Semi-Automatic (“H”). “A” mode implies calibration without user participation (process initiation, actuation of the shutter takes place automatically). In “H” mode, the user determines if calibration is required based on image quality. If calibration is needed, the operator uses the “Cal” button. In “M” mode, manual calibration is accomplished by pressing the “Cal” button when the lens cap is closed. “M” mode is recommended for hunting due to silent operation.

## ⚡ Display Off

During short periods of inactivity and better concealment, Display Off powers down the Quantum Lite’s screen without interrupting other operating functions. Using Display Off means a much faster restart time when you need it most.

## ⚡ External Power Supply

Operation time can be significantly prolonged by using high-capacity external power supply units, i.e. Pulsar EPS3/EPS5. When used at low temperatures, the power supply can be kept in a warm place, i.e. under clothing, to prevent rapid discharge.

## ⚡ User Interface

Information about the status of the Quantum Lite, depicted in the form of blue icons and numbers, is located on the data panel in the lower portion of the screen and does not interfere with field-of-view. When toggling between various functions, i.e. digital zoom, color inversion, brightness/contrast settings, etc., the respective, more pronounced icon appears in the upper right corner of the display.

SKU	77337	77332
Model	XQ23V	XQ30V
Objective lens	F23/1.4	F30/1.6
Microbolometer, resolution, pixels @ pixel pitch, μm	384x288 @ 17	384x288 @ 17
Frame rate, Hz	50	50
Magnification, x	1.8 – 7.2	2.5 – 10
Field of view, horizontal & vertical without zoom, deg	16.5x12.4	12.4x9.3
Range of detection, m	800	900
Dimensions, mm	200x86x59	204x86x59
Weight (without batteries), kg	0.35	0.35